

# **Green Investment Scheme**

**Subsidy Programme for Energy  
Savings and Renewables**

**State Environmental Fund  
Czech Republic**

**Zelená úsporám**

## Key aims of the Programme

- reduction of CO2 emissions
- reduction in dust particle contamination
- increased use of renewable energy sources
- energy savings in heating in residential sector
- savings in heating costs for households
- job creation / retention
- improvement of housing conditions

## Programme duration

April 2009 – December 2012

## Source of financing

Sale of emission credits under the Kyoto Protocol on GHG emissions (overall anticipated allocation up to 25 billion CZK)

### *Existing contracts:*

- March 2009 – NEDO (40 mil. AAUs)
- September 2009 – Mitsui & Co. Ltd. (20 mil. AAUs)
- October 2009 – Austria (3.5 mil. AAUs)
- October 2009 – Spain (5 mil. AAUs)

## Subsidised buildings

- Family houses
- Apartment buildings (non-panel technology)
- Apartment buildings (panel technology) - to a limited extent

*All types of the above mentioned buildings must be used mainly (i.e. at least 50 % of the floor area) for the purpose of living*

## Entitled applicants

- Natural persons
- Legal persons (such as associations of flat owners, municipalities etc.)

*All applicants must be owners of the buildings, who either live there or rent them to other people for the purpose of living*

# Areas of Subsidy

## Area A: Energy Savings in Heating

*Level of subsidy: based on the floor area of the subsidised building (max. 350 m<sup>2</sup> per family house, max. 120 m<sup>2</sup> per flat)*

### **A.1: Complex thermal insulation**

(at least 40 % savings, specific heat use: family houses - up to 70 / 40 kWh/m<sup>2</sup>, apartment buildings - up to 55 / 30 kWh/m<sup>2</sup>)

### **A.2: Partial thermal insulation**

(at least 20 / 30 % savings)

*Note: Panel buildings can only apply in sub-area A.1.*

# Areas of Subsidy

## Area B: Construction in passive energy standard

*Level of subsidy: fixed amount per family house or per flat in an apartment building*

**B.1: New constructions**

**B.2: Reconstructions of existing buildings**

(Specific heat use: family houses – up to 20 kWh/m<sup>2</sup>, apartment buildings – up to 15 kWh/m<sup>2</sup>)

# Areas of Subsidy

## **Area C: Use of Renewable Energy Sources for Heating and Hot Water Preparation**

*Level of subsidy: fixed amount for each particular type of installation*

**C.1: Replacement of environment unfriendly heating for low-emission biomass-fired sources and efficient heat pumps**

**C.2: Installation of low-emission biomass-fired sources and efficient heat pumps in new buildings**

**C.3: Installation of solar-thermal collectors**

- C.3.1 Systems for hot water preparation
- C.3.2 Systems for hot water preparation and additional heating

# Areas of Subsidy

## Subsidy bonus

*Level of subsidy: fixed amount per family house or apartment buildings for selected combinations of measures (realized on the same building by the same applicant)*

**Combinations entitled for subsidy bonus:**

**A+C.1; B+C.3; C.2+C.3.2**

***Note:** Aim of the subsidy bonus is to increase the motivation of the potential applicants to submit more than one application for subsidy from the GIS programme.*

# Amendment of the Programme

April 2009: **Announcement of the Programme**

August 2009: **Amendment of the Programme** on the basis of analysis of its progress during the first months

## ***Main changes:***

- Panel apartment buildings can apply for complex insulation (A.1) from Sept. 2009 onwards
- Reconstructions can be subsidised in area B
- Modification of the requirements for projects in sub-area A.2
- New segment of the Programme – subsidy for preparation of the project documentation (only disbursed to applications submitted by March 2010)

# Main organisations involved in the Programme

**Ministry of the Environment:** umbrella organisation (announced the Programme, determines the Programme conditions)

**State Environmental Fund (SEF):** main administrator (administrates the information system of the Programme, prepares the background documents for the approval process, is in charge of the project inspections - at least 5 % of the projects)

**Regional offices of SEF, selected banks:** main contact points for applicants (accept and assess the applications)

**Consultation points** (members of the Czech Chamber of Authorised Engineers and Technicians Engaged in Construction, NGOs etc.)

## Main points on administration

- Applications can be submitted **before or after the realization** of the subsidised measure
- Subsidy is always **disbursed after** the measure was finished
- Requested **annexes** of the application: technical documentation, calculation of the specific heat use by an authorised person, statement on the ownership of the building etc.
- Applications can be submitted for **projects commissioned after 1st April 2009** and **12 months after commissioning** of the project at the latest

# Lists of products and suppliers

## List of Products and Technologies (LPT)

- List of products and technologies that can be subsidised from the GIS programme
- (Total number of products as at 5th Feb. 2010: **5.121**)

## List of Qualified Suppliers (LQS)

- List of companies and entrepreneurs that are qualified to realize the measures within the GIS programme
- (Total number of suppliers as at 5th Feb. 2010: **8.016**)

*LPT and LQS are not required for B projects.*

# Evaluation of the Programme

## Greening

= additional reduction of GHG (CO<sub>2</sub>) emissions in relation to the subsidy level corresponding to income from sale of 1 AAU

- expressed as 1:x, where x is equal to the number of AAUs needed for reduction of 1 ton of CO<sub>2</sub> emissions

*Referential period: 15 years*

---

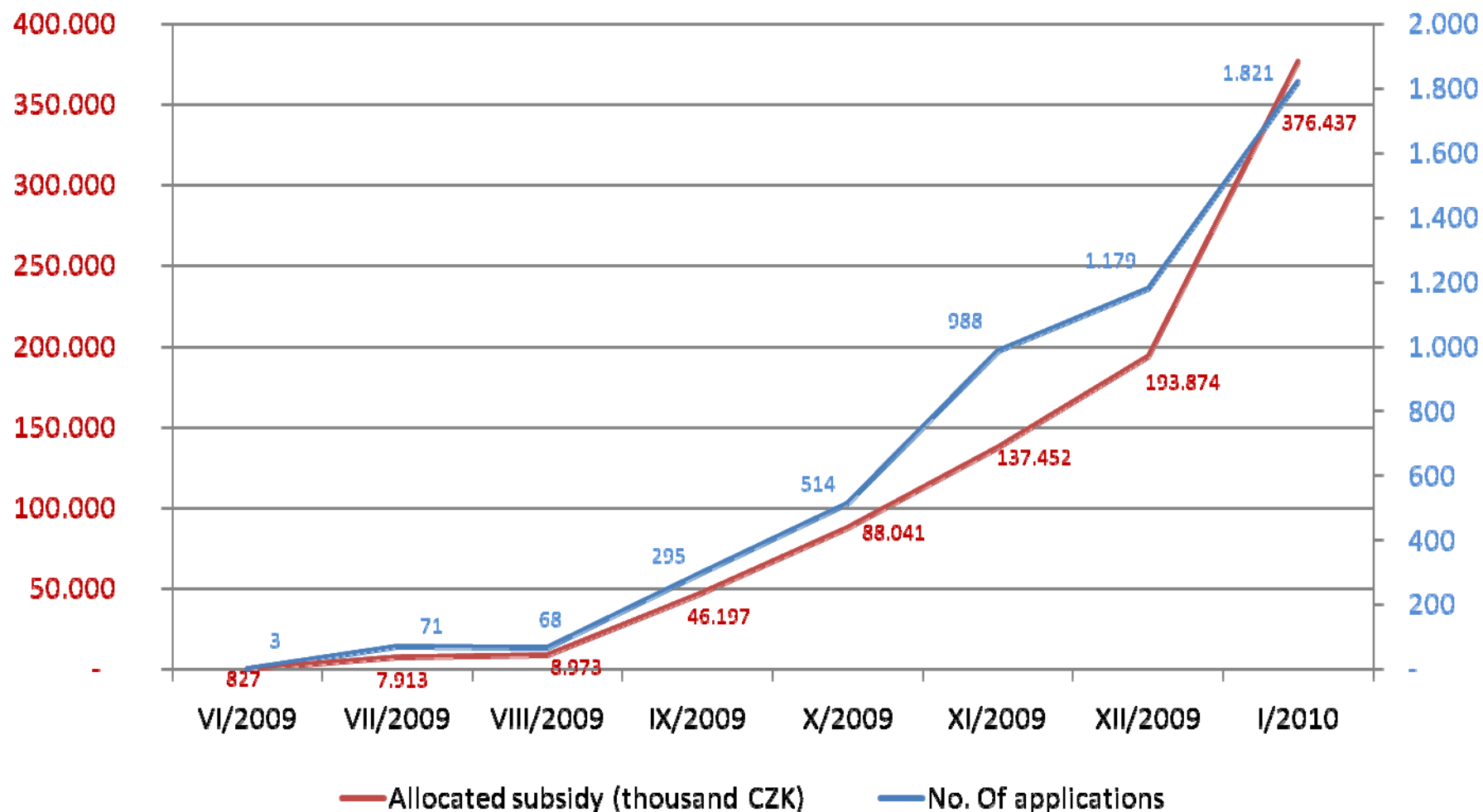
## CO<sub>2</sub> emission reduction - *preliminary calculations*

*(SUM – yearly CO<sub>2</sub> emission reduction due to projects submitted by January 2010; per project - yearly CO<sub>2</sub> emission reduction – average per project)*

	Number of applications	CO2 emission reduction (tons per year)	
		SUM	per project
Area A	1 914	19 993	10
Area B	23	76	3
Area C	3 002	36 064	12
<b>Total</b>	<b>4 939</b>	<b>56 262</b>	<b>11</b>

# Statistics (I.)

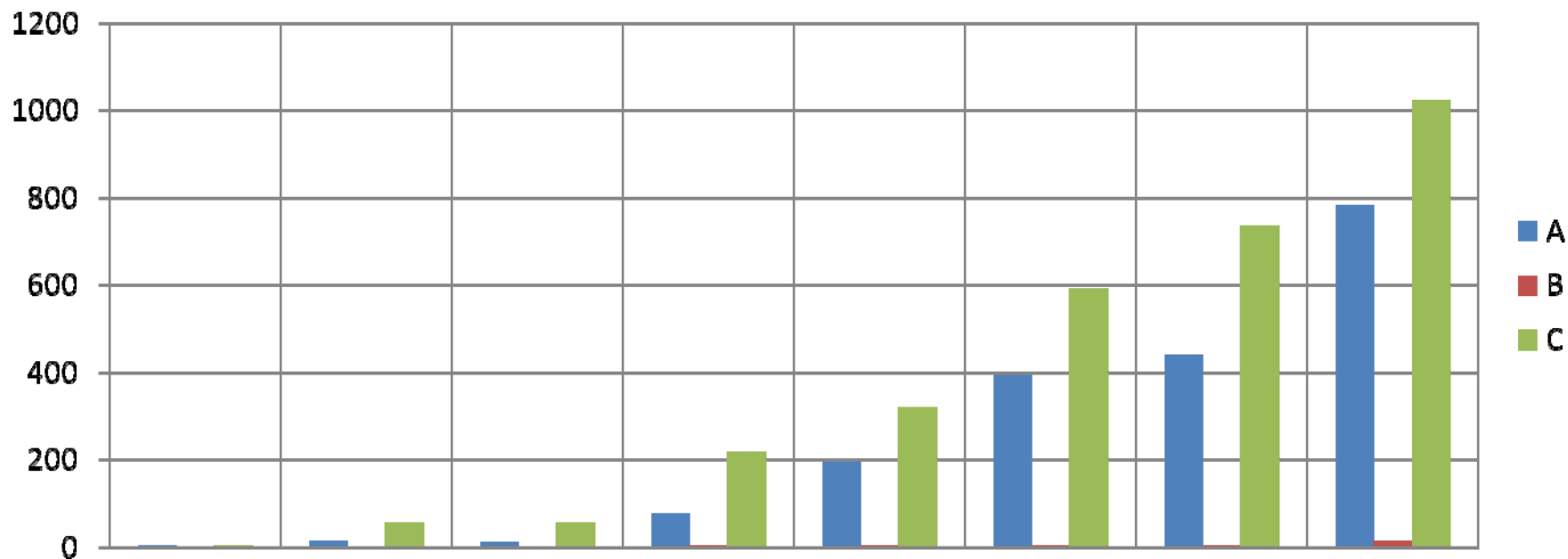
## Number of applications and level of subsidy per month



The number of submitted applications and the level of subsidy allocated to these applications has been constantly growing since the beginning of the Programme.

## Statistics (II.)

### Progress of the Programme: June 2009 – January 2010 Number of applications – by subsidy areas

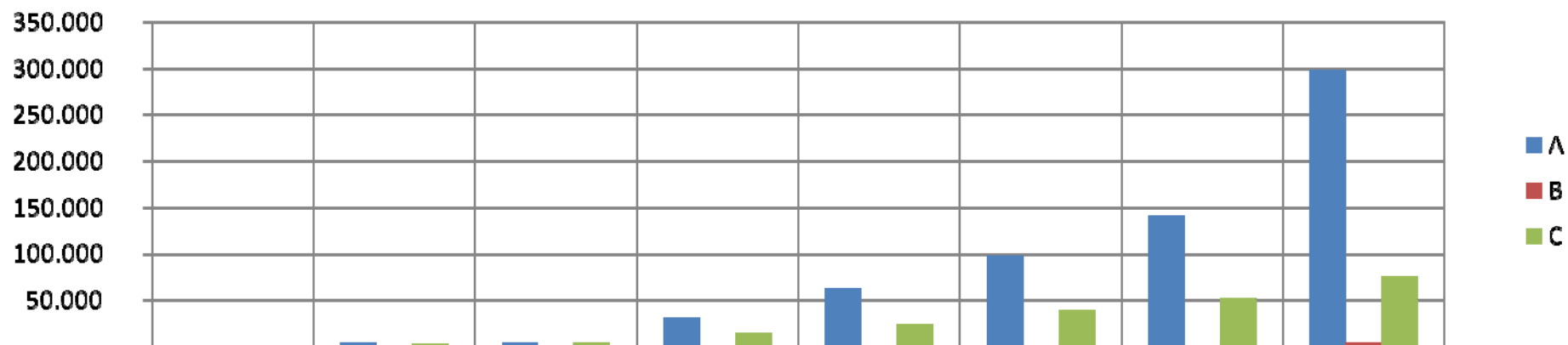


Area	VI/2009	VII/2009	VIII/2009	IX/2009	X/2009	XI/2009	XII/2009	I/2010	Total
A	2	15	11	77	193	393	441	782	1 914
B				1	1	4	2	15	23
C	1	56	57	217	320	591	736	1 024	3 002
<b>Total</b>	<b>3</b>	<b>71</b>	<b>68</b>	<b>295</b>	<b>514</b>	<b>988</b>	<b>1 179</b>	<b>1 821</b>	<b>4 939</b>

# Statistics (III.)

## Progress of the Programme: June 2009 – January 2010 Allocated subsidy (thousand CZK) – by subsidy areas

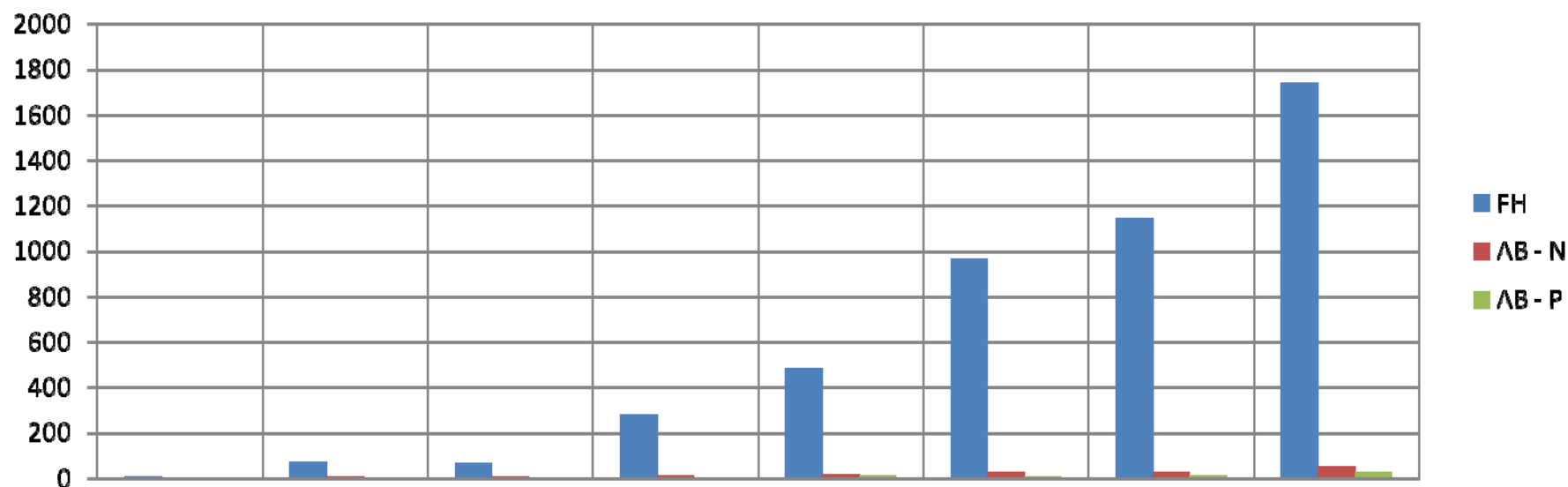
1 EUR = 26 CZK



Area	VI/2009	VII/2009	VIII/2009	IX/2009	X/2009	XI/2009	XII/2009	I/2010	Total
<b>A</b>	777	4 568	4 740	31 321	63 298	97 563	141 668	297 453	<b>641 388</b>
<b>B</b>	-	-	-	250	250	1 000	500	3 750	<b>5 750</b>
<b>C</b>	50	3 345	4 233	14 625	24 493	38 889	51 706	75 234	<b>212 575</b>
<b>Total</b>	<b>827</b>	<b>7 913</b>	<b>8 973</b>	<b>46 196</b>	<b>88 041</b>	<b>137 452</b>	<b>193 874</b>	<b>376 437</b>	<b>859 713</b>

## Statistics (IV.)

### Progress of the Programme: June 2009 – January 2010 Number of applications – by type of building

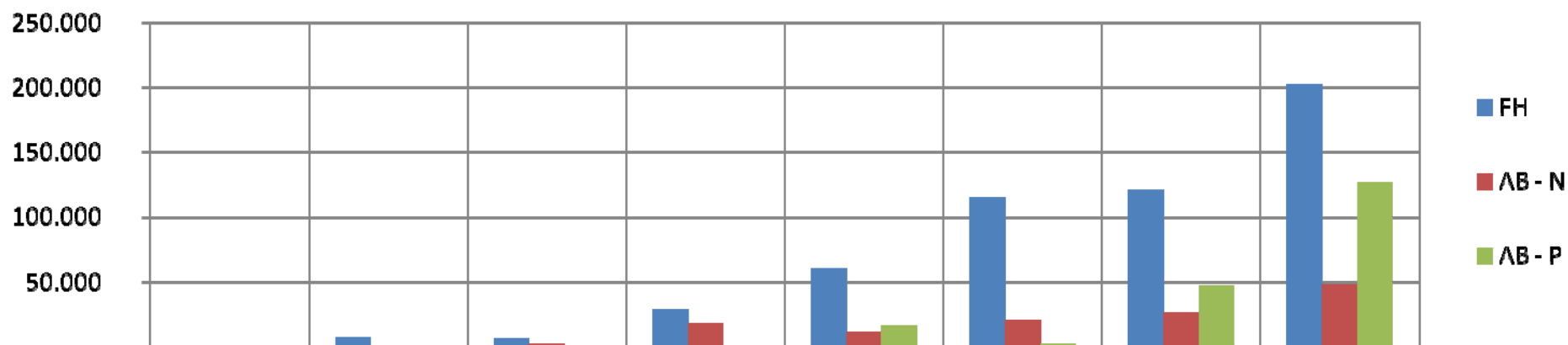


	VI/2009	VII/2009	VIII/2009	IX/2009	X/2009	XI/2009	XII/2009	I/2010	Total
<b>FH</b>	3	70	66	282	485	963	1 143	1 743	<b>4 755</b>
<b>AB - N</b>		1	2	13	17	24	24	50	<b>131</b>
<b>AB - P</b>					12	1	12	28	<b>53</b>
<b>Total</b>	<b>3</b>	<b>71</b>	<b>68</b>	<b>295</b>	<b>514</b>	<b>988</b>	<b>1 179</b>	<b>1 821</b>	<b>4 939</b>

# Statistics (V.)

## Progress of the Programme: June 2009 – January 2010 Allocated subsidy (thousand CZK) – by type of building

1 EUR = 26 CZK

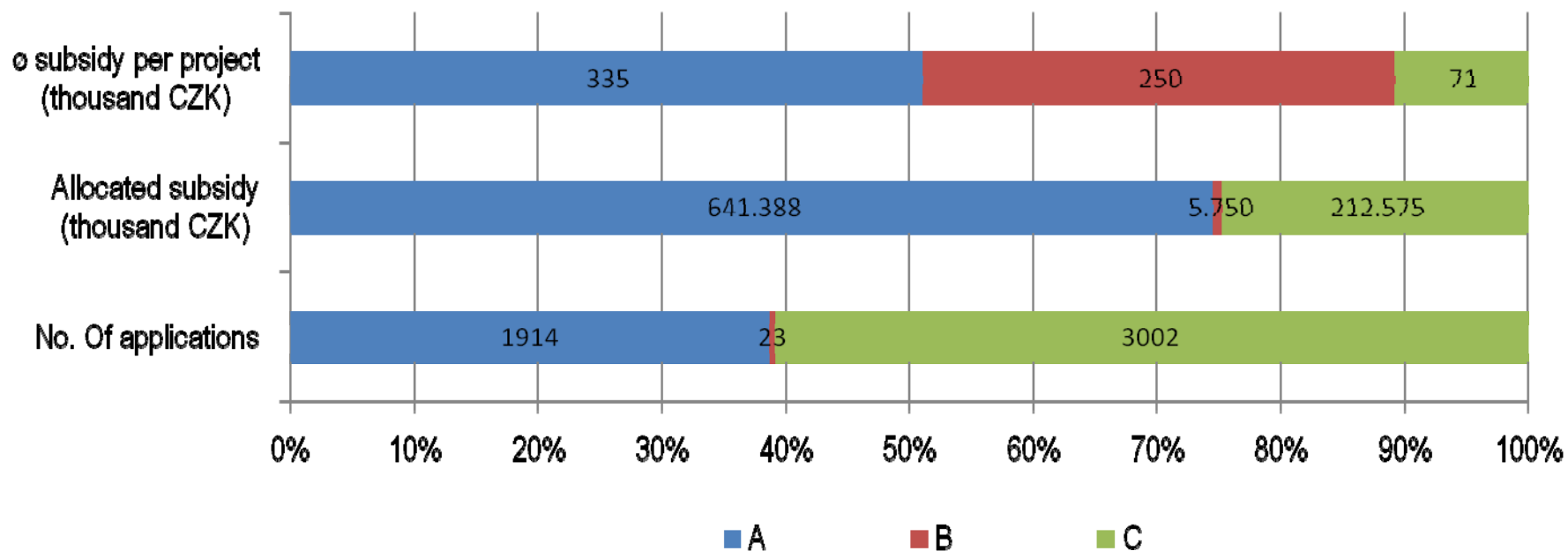


	VI/2009	VII/2009	VIII/2009	IX/2009	X/2009	XI/2009	XII/2009	I/2010	Total
<b>FH</b>	827	7 402	6 575	28 434	60 391	115 168	121 094	202 068	<b>541 958</b>
<b>AB - N</b>	-	511	2 398	17 762	11 242	20 158	26 087	48 050	<b>126 208</b>
<b>AB - P</b>	-	-	-	-	16 408	2 125	46 694	126 320	<b>191 547</b>
<b>Total</b>	<b>827</b>	<b>7 913</b>	<b>8 973</b>	<b>46 196</b>	<b>88 041</b>	<b>137 452</b>	<b>193 875</b>	<b>376 437</b>	<b>859 713</b>

# Statistics (VI.)

## Average subsidy per project – by subsidy area

1 EUR = 26 CZK

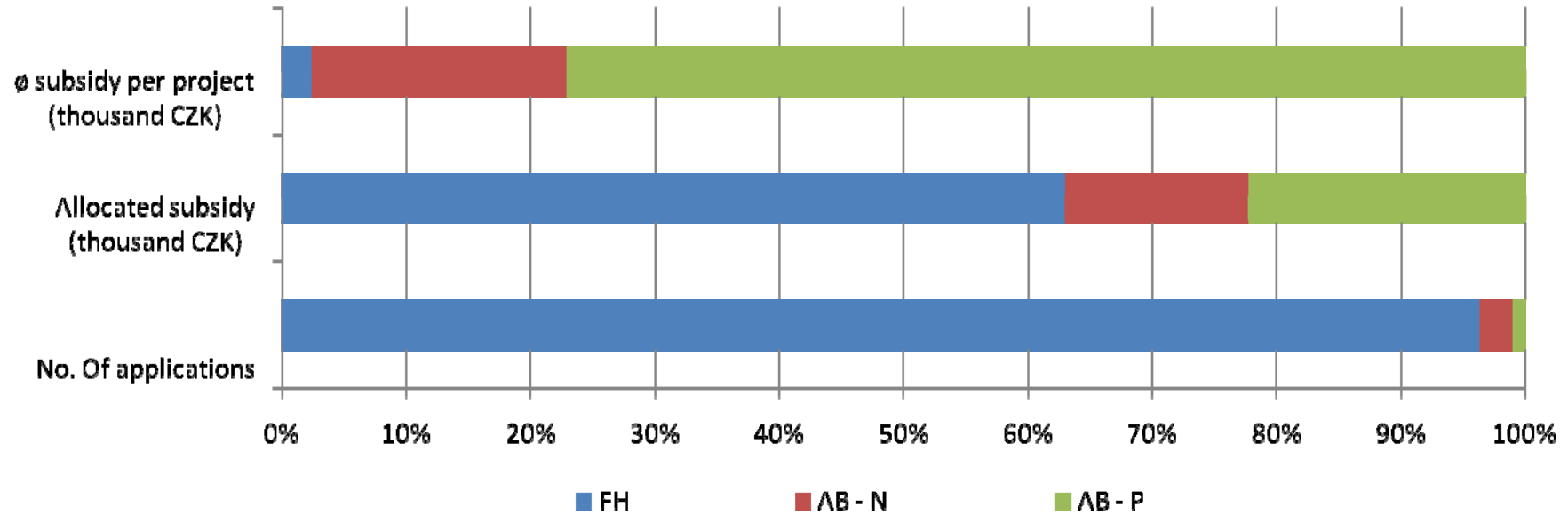


Area	No. Of applications	Allocated subsidy (thousand CZK)	∅ subsidy per project (thousand CZK)
A	1 914	641 388	335
B	23	5 750	250
C	3 002	212 575	71
<b>Total</b>	<b>4 939</b>	<b>859 713</b>	<b>174</b>

# Statistics (VII.)

## Average subsidy per project – by type of building

1 EUR = 26 CZK



Type of building	No. Of applications	Allocated subsidy (thousand CZK)	∅ subsidy per project (thousand CZK)
FH	4755	541 958	114
AB - N	131	126 208	963
AB - P	53	191 547	3 614
<b>Total</b>	<b>4939</b>	<b>859 713</b>	<b>174</b>

# Statistics (VIII.) – 2009 summary

	No. of applications	Level of subsidy (thousand CZK)		Investment costs (thousand CZK)		
		Total	ø per project	Total	ø per project	
<b>A</b>	<b>1 132</b>	<b>343 935</b>	<b>304</b>	<b>657 651</b>	<b>581</b>	
Complex insulation	AB-N	40	56 739	1 418	100 671	2 517
	AB-P	15	59 522	3 968	113 228	7 549
	FH	360	118 799	330	219 358	609
Partial insulation	AB-N	32	17 738	554	38 875	1 215
	FH	685	91 137	133	185 518	271
<b>B</b>	<b>8</b>	<b>2 000</b>	<b>250</b>	<b>20 889</b>	<b>2 611</b>	
Passive constructions	FH	8	2 000	250	20 889	2 611
<b>C</b>	<b>1 978</b>	<b>137 340</b>	<b>69</b>	<b>344 001</b>	<b>174</b>	
Biomass boilers	AB-N	1	50	50	92	92
	FH	464	36 181	78	58 991	127
Solar collectors	AB-N	6	3 091	515	5 722	954
	AB-P	10	5 705	571	14 023	1 402
	FH	1 253	77 023	61	179 832	144
Heat pumps	AB-N	2	540	270	2 657	1 328
	FH	242	14 750	61	82 684	342
<b>Total</b>	<b>3 118</b>	<b>483 276</b>	<b>155</b>	<b>1 022 541</b>	<b>328</b>	

